



TO BE YOUR DEVOTED PARTNER

CONCRETE MIXING PLANTS CONCRETE PUMPING PLANTS

ZHENGZHOU HAMAC AUTOMATION EQUIPMENT CO., LTD

Tel: 0086-371-86525099 0086-151-36236223

Website: www.hamacchina.com

Email: sales@hamacchina.com

Address: 57th, Kexue Avenue, National HI-TECH Industrial
Development Zone, Zhengzhou, China

Note: HAMAC follows the principle of the perfecting the performance of the products, material and specification may changed without advice. The ultimate explanation belongs to HAMAC company.



CONCRETE MIXING PLANTS CONCRETE PUMPING PLANTS

ZHENGZHOU HAMAC AUTOMATION EQUIPMENT CO., LTD



ABOUT HAMAC

HAMAC Automation Equipment Co., Ltd is a professional supplier for construction machinery located in Zhengzhou and Qingdao, China. Based on the two manufacture bases, HAMAC's Parent company occupies big market in domestic market, and built agents and distributors in China mainland. HAMAC is treated as an international brand to promote the overseas market. We are becoming a famous global brand in construction machinery industry.

Create Value For Partners

HAMAC treat all the clients, suppliers, corporate share holders, employees, and all units and individuals with their won as partners. Only through hard efforts to create value fo rpartners, then it can reflect its own value and the development and success.

Corporate Culture

Honesty / Tolerance / Innovation / Service

HAMAC believe honesty is the foundation of all cooperation, tolerance is the premise to solve the problem, innovation is an important weapon of the development, service is the basic condition of creating value.

Why Choose HAMAC?

HAMAC owns a strict quality control system to select our suppliers, to check all the products from HAMAC also; HAMAC does not pursue a high profit, but with reasonable profits to cover basic cost and to confirm the quality; HAMAC provides our clients with professional exporting service more than products, to make your purchase experience satisfied.

CATALOGUE

Stationary Concrete Batching Plant

1

Mobile Concrete Batching Plant

3

Portable Concrete Batching Plant

5

Asphalt Mixing Plant

7

Self-loading Concrete Mixer

9

JS Twin Shaft Concrete Mixer

13

MP Series Planetary Concrete Mixer

15

JZR Series Diesel Driven Concrete Mixer

17

Cement Silo

19

Concrete Transit Mixer

21

Trailer Concrete Pump

23

Concrete Mixer With Pump

27

Truck-mounted Concrete Pump (Concrete Line Pump)

29

Truck-mounted Concrete Boom Pump

31

Spider Concrete Placing Boom

33

Self Climbing Concrete Placing Boom

35

Stationary Concrete Batching Plant



ADVANTAGES

Stationary concrete batching plant

HAMAC concrete batch plant adopts famous brand parts to make the mixing plant works stable and reliable.

1. Pneumatic cylinder, from Japan SMC;
2. Vibrators, from Italy WAM;
3. Butterfly valves, from Italy WAM;
4. Air compressor, water pumps, cables and electrical components are from top-class suppliers;
5. Separate gearbox, motor and drum for belt conveyors, it will be more convenient for the client to maintain it;
6. All the machines are above ground, more convenient for maintain;
7. Bolted type cement silo, to save the shipping cost. All the accessories for cement silos are from Italy WAM;



HZS90 in Cebu, Philippines



HZS50 batching plant



HZS60 in Manila, Philippines

TECHNICAL DATA

Stationary concrete batching plant

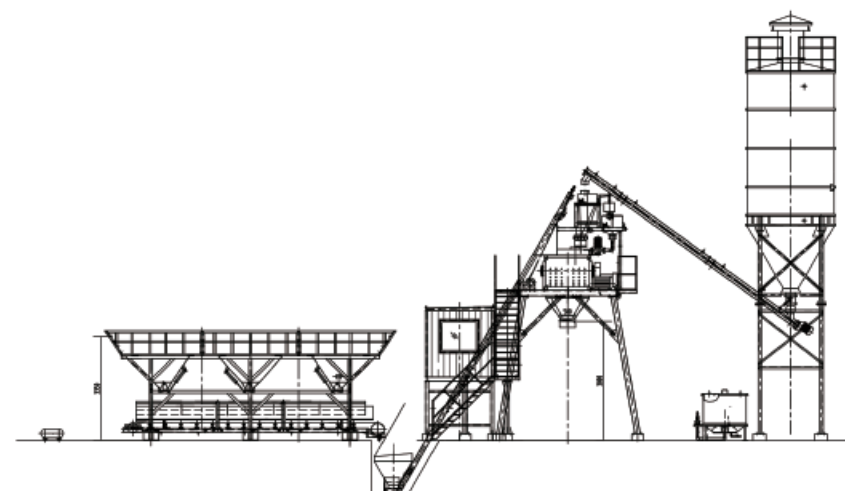
Model	HZS25	HZS35	HZS50	HZS60	HZS75	HZS90	HZS120	HZS180(150)
Theoretical Capacity(m ³ /h)	25	35	50	60	75	90	120	180(150)
Mixer model	JS500	JS750	JS1000	JS1000	JS1500	JS1500	JS2000	JS3000
Batching system	PLD1200	PLD1200	PLD1600	PLD1600	PLD2400	PLD2400	PLD3200	PLD4800
Discharging height (mm)	4100	4100	4100	4100	4100	4100	4100	4100
Maximum aggregates size(mm)	60(80)	60(80)	60(80)	60(80)	60(80)	60(80)	60(80)	60(80)
Automatic Cycle time(s)	72	72	72	60	72	60	60	60(72)
Total Power(KW)	50	61	84	106	127	145	175	215

* Note: HAMAC follows the principle of the perfecting the performance of the products, material and specification may changed without advice.

INTRODUCTION

As a mature manufacturer of stationary concrete batching plant, HAMAC designed this series stationary concrete batching plant which is suitable for commercial concrete sale and own projects. It is equipped famous brand components such as pneumatic cylinders, vibrators, air compressor, SICOMA concrete mixer and motors etc.

A wheel loader will feed the 4 different hoppers for different sizes aggregates, and then the aggregates and sand will be weighed by the load cells, and the cement comes from the cement silo by the screw conveyor, water is supplied by the water pump will be weighed as well by different load cells, then all of these material will be fed into the mixer for mixing. After mixing, the concrete will be discharged into the concrete mixer truck. All of the weighing, mixing and discharging process are controlled by the software automatically.



Mobile Concrete Batching Plant



INTRODUCTION

It is a convenient concrete batching plant for your project. The mobile concrete batching plant is a concrete mixing equipment that integrates the material storage, weighing, conveying, mixing, discharging and automatic control systems of the traditional stable concrete batching plant into a single trailer unit; it is as same as the stable automatic concrete batching plant.



ADVANTAGES

Mobile Concrete Batching Plant

1. The structure is compact, and almost all the processes of concrete production are concentrated on the trailer unit;
2. The operation interface is humanized, the working performance is reliable, and it can still run stably in various harsh environments;
3. The twin-shaft concrete mixer has excellent continuous operation ability, comprehensive mixing trajectory, strong mixing motion, and rapid and uniform mixing;
4. Highly automation, excellent maneuverability, simple operation and good stability;
5. The structure is firm, the space layout is compact and reasonable, which ensures flexibility and production capacity at the same time ,so which is not inferior to the stationary concrete batching plant;
6. The mobile batching plant occupies less area and is easy to move around, which greatly reduces the amount of basic engineering;
7. The mixing and metering platform is equipped with an epitaxial platform, and the space is as same as the stationary concrete batching plant, which fully guarantees the needs of commissioning and maintenance.



● Mobile concrete batching plant is being transported



● Mobile concrete batching plant is working

TECHNICAL DATA

Mobile Concrete Batching Plant

Model	YHZS25	YHZS35	YHZS50/60	YHZS75/90	YHZS100
Theoretical Productivity (m ³ /h)	25	35	50/60	75	100
Central Mixer	0.5m ³ per batch	0.75m ³ per batch	1.0m ³ per batch	1.5m ³ per batch	2.0m ³ per batch
Aggregate Batching System	4 hoppers	4 hoppers	4 hoppers	4 hoppers	4 hoppers
Discharging Height (mm)	3800	3800	3800	4000	4000

* Note: HAMAC follows the principle of the perfecting the performance of the products, material and specification may changed without advice.

Portable Concrete Batching Plant



INTRODUCTION

A portable concrete batching plant for sale is batch mix plant without foundation. For this kind of concrete batching plant, it can be towed to different working sites by a tractor or wheel loader. For this type machine, the foundation is not required. It will save the time and cost for installation. It is a real mobile concrete batching plant. It is widely used in Asia, Africa and Latin America.



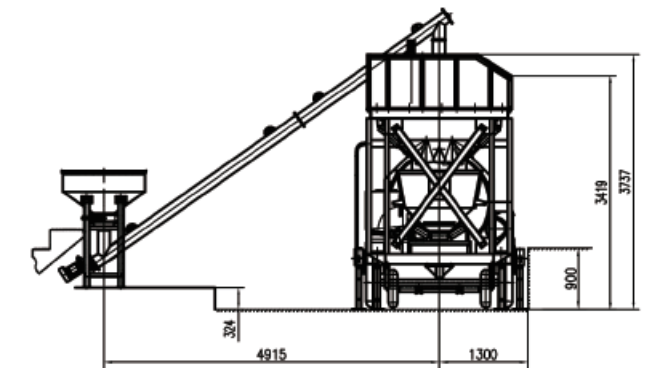
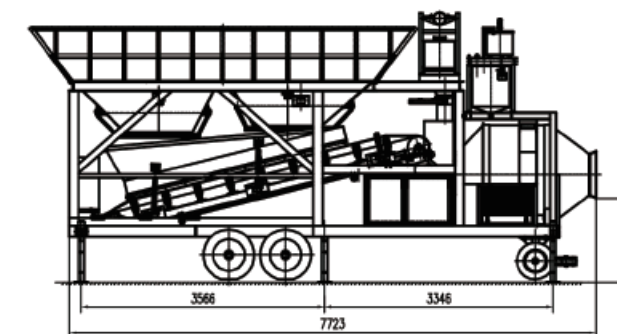
ADVANTAGES

Portable Concrete Batching Plant

1. The structure is compact, and almost all the processes of concrete production are concentrated on the trailer unit;
2. No need to prepare foundation, it can work as soon as it arrives the working site;
3. Two options concrete mixer, drum type concrete mixer and twin-shaft concrete mixer;
4. It can be fit into a 40ft container for the complete machine;
5. Cement silo or cement hopper can be equipped to this portable concrete batching plant;
6. The price of this portable concrete batching plant is lower, cheaper than the one with double shafts concrete mixer.



- Portable concrete batching plant is ready for being loaded into container



- Layout of portable concrete batching plant

TECHNICAL DATA

Portable Concrete Batching Plant

Model	YHZM20	YHZM25
Theoretical Productivity (m ³ /h)	25	25
Central Mixer	0.5m ³ per batch, JZM500 drum concrete mixer	0.5m ³ per batch, JS500 twin-shaft concrete mixer
Aggregate Batching System	3 hoppers	3 hoppers
Discharging Height (mm)	1200	3800

* Note: HAMAC follows the principle of the perfecting the performance of the products, material and specification may changed without advice.

Asphalt Mixing Plant



INTRODUCTION

Asphalt mixing plant, also known as asphalt concrete mixing plant, asphalt concrete batching plant, refers to complete sets of equipment for mass production of asphalt concrete. According to the mixing method, it can be divided into forced batch type and continuous type; according to the transportation method, it can be divided into stationary type, semi-mobile type and mobile type.



ADVANTAGES

Asphalt Mixing Plant

1. Exquisite modular design and integral steel structure foundation, the layout is more reasonable, and the disassembly-transportation-installation is faster and more convenient.
2. Skirt-type feeding belt ensures more stable and reliable feeding.
3. The special design of the drying drum material plate and the advanced self-developed combustion heating technology improve the efficiency and reduce the energy consumption.
4. The plate chain type hot aggregate and powder lifting design improves the service life of the hoist.
5. The asphalt mixing station is designed with a high-level hot aggregate silo to increase the storage capacity of the hot aggregate silo, without the need to wait for materials and increase the output.
6. Using the world's most advanced pulse bag dust removal technology, the dust emission is lower than 20mg/Nm³, which is in line with international high environmental protection standards.
7. Automatic/manual control system, with fault self-diagnosis feedback program, simple and stable operation.
8. The optimized design and the hard tooth surface reducer with high conversion rate are adopted at the same time, and the energy saving efficiency is high.
9. The core components use foreign products, such as Siemens motors and electrical components, EBICO burners, Swiss METTLER TOLEDO load cells, etc., which reduces the failure rate of the equipment and prolongs the service life of the equipment.

TECHNICAL DATA

Asphalt Mixing Plant

Model	Capacity (Standard Conditions)	Mixer Capacity	Dust Remove Effect	Total Power	Fuel Consumption	
					Fuel Oil	Fuel Coal
HMC700	60t/h	750kg	≤20mg/Nm ³	178kW	5.5-7kg/t	10kg/t
HMC1000	80t/h	1000kg	≤20mg/Nm ³	285kW	5.5-7kg/t	10kg/t
HMC1200	100t/h	1200kg	≤20mg/Nm ³	316kW	5.5-7kg/t	10kg/t
HMC1500	120t/h	1500kg	≤20mg/Nm ³	380kW	5.5-7kg/t	10kg/t
HMC2000	160t/h	2000kg	≤20mg/Nm ³	470kW	5.5-7kg/t	10kg/t
HMC2500	200t/h	2500kg	≤20mg/Nm ³	547kW	5.5-7kg/t	10kg/t
HMC3000	240t/h	3000kg	≤20mg/Nm ³	700kW	5.5-7kg/t	10kg/t
HMC4000	300t/h	4000kg	≤20mg/Nm ³	870kW	5.5-7kg/t	10kg/t

* Note: HAMAC follows the principle of the perfecting the performance of the products, material and specification may changed without advice.

Self-loading Concrete Mixer



ADVANTAGES

Self-loading Concrete Mixer

1. It owns all the functions of concrete batching plant;

It combines loading, mixing, transit and discharging; 270 degree rotation mixing drum, it can discharge the concrete in different directions; 4*4 drive mode, it is suitable for different rough working conditions;



INTRODUCTION

As a mature manufacturer of self-loading concrete mixer, HAMAC designed this series mobile concrete mixer which is suitable for different projects. It is equipped famous brand components such as diesel engine, hydraulic oil pump and motors, valves, seals and hose etc. It is also named as MOTORMIXER, self loader concrete mixer etc. It is easily to be operated and cost efficient to produce and distribute fresh concrete for mining, industrial complexes, shopping plazas, office buildings, warehouses, and residential homes for applications such as footings, poured foundations, floors, sidewalks, driveways, curbs, patios, pools, etc.



2. High quality components and parts;

Famous brand engine, YUCHAI and CUMMINS as options; Equipped with famous brand hydraulic system for stable work performance; An electronic weighting system and printer is available, The weighing scales monitor is at the operator's convenience to certify 100% quality concrete is produced. Water pump has the ability to draw water from any water source available (ponds, Lakes, rivers, water containers, etc.) to its water tank. From its tank, the water is pumped through the flow meter, making sure the right amount of water is added, to the drum.

3. Humanized function design

Well-decorated cabin for driver, equipped with air conditioner; more comfortable; All the functions controlled by joystick and buttons;

Equipped with washing system, you can make the machine clean immediately after finishing working;



4. More options;

Five models available: from the largest 4.5 m³ to the smallest machine of 1.5m³ with articulated chassis, designed to easily pass down even the narrowest streets.



HMC190

HMC180

HMC200/260

HMC350

HMC400

5. Different shipping ways;

It can be delivered by the container, save cost for sea freight; it also can be delivered by RORO vessel or bulk good vessel, so the client can use it as soon as they receive the machine.



ADVANTAGES

Self-loading Concrete Mixer

6. Wide range of application

There is always a HAMAC unit that can do the job. Depending on the site conditions and which HAMAC machine used, the concrete can be produced at site and poured immediately for house and workshop in remote areas, concrete road, water canal, infrastructure in remote areas and reservoir dam project etc.



7. Strong production strength and excellent service

Factory direct sales, systematic and standardized procedures from receiving orders to organizing shipment ensuring the quality and high efficiency;



TECHNICAL DATA

Self-loading Concrete Mixer

Model	Output Volume Per Batch (m ³)	Motor Power (kW)	Weight (kgs)	Overall Dimension (mm)
HMC150	1.5	78	5700	7300*2450*3750
HMC190	1.9	30	4300	4900*2000*3000
HMC200/250	2.0/2.5	78	6500/6800	7560*2450*3950
HMC350	3.5	85	7500	7830*2480*4170
HMC400	4.0	92	8300	7800*2500*3400
HMC550	5.5	110	11200	8450*3100*4580

* Note: HAMAC follows the principle of the perfecting the performance of the products, material and specification may changed without advice.

JS Twin Shaft Concrete Mixer



INTRODUCTION

Twin shaft concrete mixer, is also named double shaft horizontal concrete mixer. It is the most widely used concrete mixer for the different types of concrete mixer. It is mainly suitable for mixing dry hard concrete, plastic concrete, wet concrete, various mortars and other commercial concrete. It is equipped with automatic grease pump for lubrication, hydraulic discharge opening etc.



ADVANTAGES

JS Twin Shaft Concrete Mixer

1. Compact: small footprint, easy to be produced, transported and installed;
2. Intelligence: automatic lubrication, independent pump core, balanced pressure, good sealing;
3. Safety: The safety switch and the emergency stop switch are double-insured, with a high safety factor. ,
4. Low noise: planetary reducer, small size;
5. Reliable: The new shaft end seal has good performance and long service life.



TECHNICAL DATA

JS Twin Shaft Concrete Mixer

Model	JS500	JS750	JS1000	JS1500	JS2000	JS3000	
Discharging Volume (L)	500L	750L	1000L	1500L	2000L	3000L	
Feeding Volume (L)	800L	1200L	1600L	2400L	3200L	4800L	
Capacity	≥25m³/H	≥37.5m³/H	≥50m³/H	≥75m³/H	≥100m³/H	≥150m³/H	
Maximum Aggregate Size (Pebble/Gravel)Mm	40/50	40/60	60/80	80/100	80/100	80/120	
Cycle Time (S)	72	72	60	60	60	60	
Total Weight (Kgs)	4000	5500	8700	11300	15000	11450	
Discharge Height (M)	3.8	3.8	3.8	3.8	3.8	3.8	
Mixing Blade	Rotary Speed	35r/Min	26r/Min	29.6r/Min	24.5r/Min	24.5r/Min	21r/Min
Quantity	2×7	2×7	2×8	2×8	2×10	2×10	
Mixing Motor	Model	Y180M-4	Y200L-4	Y180M-4	Y225M-6	Y250M-6	Y280M-6
	Power	18.5kw	30kw	2x18.5kw	2x30kw	2X37kw	2X55kw
Hoist Motor	Model	YEZ1325-4-B5	YEZ132M-4-B5	YEZ160L-4	YEZ180L-4	YEJ180L-4	Y25M -4
	Power	5.5KW	7.5KW	15KW	18.5KW	22KW	2X55kw
Pump Motor	Power	1.1KW	1.1KW	3KW	3KW	4KW	5KW

* Note: HAMAC follows the principle of the perfecting the performance of the products, material and specification may changed without advice.

MP Series Planetary Concrete Mixer

INTRODUCTION

MP series planetary concrete mixer adopted Germany technique used for mixing concrete .It is not only applied in common concrete , precast concrete but also in high performance concrete. Planetary Concrete Mixers widely apply to produce precast concrete, common commercial concrete and high performance concrete. It is suitable for mixing dry hard concrete (roller compacted concrete). It is widely used in the production of building blocks and prefabricated parts, and also can be used to produce of steel fiber reinforced concrete, color concrete and dry mortar, etc.



ADVANTAGES

MP Series Planetary Concrete Mixer

1. Motion Track: The revolution and rotation speed of the blades have been extensively studied and tested to give the mixer a high output without causing the segregation of materials with different grain size and weight.
2. Discharging Device: According to the different demands of customers, the discharging door can be opened by hydraulic, pneumatic or by hands.
3. Hydraulic Power Unit: Special designed hydraulic power unit is used to provide power for more than one discharging gates. On emergency, these discharging gates can be opened by hand.
4. Mixing Device: Driven by the gearing system, the blades fixed on mixing arms and the scrapers arms crush and overturn the material to complete the compelling mixing.

TECHNICAL DATA

MP Series Planetary Concrete Mixer

Item \ Type	MP250	MP330	MP500	MP750	MP1000	MP1500	MP2000	MP2500	MP3000
Input capacity(L)	375	500	750	1125	1500	2250	3000	3750	4500
Output capacity(L)	250	330	500	750	1000	1500	2000	2500	3000
Output capacity(kg)	600	800	1200	1800	2400	3600	4800	6000	7200
Diameter of Mixing Trough(mm)	1300	1540	1900	2192	2496	2796	3100	3400	3400
Mixing power(kw)	11	15	18.5	30	37	55	75	90	110
Discharging power(kw)	2.2	2.2	2.2	2.2	3	3	4	4	4
Scraper(nr)	1/2	1/2	1/2	1/3	2/4	2/4	3/6	3/6	3/9
Paddle	1	1	1	1	1	1	1	1	1
Discharging paddle	-	-	-	1	1	1	2	2	2
Weight(kg)	1200	1700	2000	3500	6000	7000	8500	10500	11000
Dimension (L*W*H)mm	1570 x1480 x1750	1862 x1850 x1855	2220 x2071 x1880	2550 x2295 x2195	2893 x2606 x2217	3223 x2906 x2425	3625 x3235 x2630	3893 x3555 x2695	3893 x3555 x2975
Lifting power(kw)	3	4	4	7.5	11	15	18.5	-	-

* Note: HAMAC follows the principle of the perfecting the performance of the products, material and specification may changed without advice.

JZR Series Diesel Driven Concrete Mixer



INTRODUCTION

JZR series diesel concrete mixer is driven by diesel engine. There are two feeding modes: climbing bucket feeding and dump hopper feeding. JZR series diesel engine concrete mixer can be drawn by wheels, so it is easy to move. It is controlled by electric control box, which makes the operation very easy.



ADVANTAGES

JZR Series Diesel Driven Concrete Mixer

1. Diesel engine, especially suitable for the areas that without electricity.
2. Can be easily moved between different construction sites.
3. Easy operation; stable performance; Low energy consumption.
4. Reasonable structure, higher reliability, mixing evenly with high productivity.



TECHNICAL DATA

JZR Series Diesel Driven Concrete Mixer

Model	JZR350DW	JZR350DH	JZR500DH
Discharging Capacity(L)	350	350	500
Charging Capacity(L)	560	560	800
Productivity(m ³ /h)	10-14	10-14	20-22
Maximum Size of Aggregate(mm)	60	60	80
Hopper Lifting	Wire rope tipping	Hydraulic type	Hydraulic type
Diesel Power(KW)	9.7	13.2	13.2
Power of Water	0.75	0.75	2.2-3
Accuracy of Water	Error ≤2%	Error ≤2%	Error ≤2%
Dimensions in Container	2750×2200×2400	2300×1900×2500	2300×3300×2500
Overall Weight	1350	1400	2300

* Note: HAMAC follows the principle of the perfecting the performance of the products, material and specification may changed without advice.

Cement Silo



ADVANTAGES

Cement Silo

1. Can be customized according to client's requirement;
2. Bolted type design, can be put into container, and then assembled at site;
3. Famous brands accessories from Italy WAM, such as dust filters, level indicators, safety valve etc;
4. It is easily and quickly to be assembled, all parts of the assembly bolt type silo are connected by bolts;
5. Reliable Sealing Structure, After the bolt is tightened, the special sealing strip is compacted from 5mm to less than 1mm, and the gaps will be fully filled because of the strong elasticity.
6. Wide usage range, bolt type silos are suitable for bulk cement storage, factory bulk storage systems, bulk material logistics transfer systems, brick machine production lines, cement plants, mine sand-making plants and other bulk material storage etc.

TECHNICAL DATA

Cement Silo

Model	Volume (T)	Diameter (mm)
50T	50	3260
60T	60	3260
80T	80	3260
100T	100	3260
200T	200	4200
300T	300	4200
500T	500	6600
600T	600	6600
700T	700	6600
800T	800	6600
1000T	1000	8000
1500T	1500	10000
2000T	2000	10000

* Note: HAMAC follows the principle of the perfecting the performance of the products, material and specification may changed without advice.

INTRODUCTION



As the biggest manufacturer of cement silos in China, HAMAC designs and manufactures also customize cement silos with special sizes of diameter and discharging height. Cement silos whose capacity is more than 100 tons are manufactured as bolted type most of the time. To manufacture the silos as bolted type brings advantage of space saving during international transportation. The clients can save the cost for sea freight.



Concrete Transit Mixer



INTRODUCTION

For the concrete transportation from the batching station to the working site, HAMAC provide you with the concrete mixer truck from 4-12m³ volume. Regarding the chassis, we have different options such as SHACMAN, HOWO from SINOTRUK, FOTON etc. The client can choose the one which can get the local service easily.



ADVANTAGES

Concrete Transit Mixer

1. CNC laser cutting, small error and high precision;
2. Digital automatic welding is adopted for key processes such as the welding seam of the butt joint of the tank body, with high production efficiency, good welding seam formation and high quality;
3. The tank body and parts are sandblasted to eliminate oil stains and rust on the surface of the parts, and create good conditions for spraying paint;
4. The internal helix of the tank adopts the modified logarithmic helix curve, the feeding and discharging speed are fast, the stirring is uniform, and the residual rate is low;
5. The raw materials of the tank body and the blade are made of high-quality steel from well-known steel factories, with high wear resistance;
6. The blades are formed by cold pressing with special molds, with high precision and a unique wear protection device, which can realize the synchronous wear of the blades and the tank;
7. The raceway and roller of the tank are quenched and tempered with forged steel material, with good surface hardness and durability;
8. High-strength wear-resistant plates are welded to the feeding hopper, discharging hopper and main groove, which effectively prolongs the service life of components;
9. Large-capacity water tank, air pressure water supply, reasonable pipeline layout, convenient water addition, wide flushing range, clean and thorough flushing; Humanized design such as non-slip pedals, night work lights, etc.

TECHNICAL DATA

Concrete Transit Mixer

Item	Details	4m ³	6m ³	8m ³	10m ³	12m ³
Chassis	Model/brand/origin	(YUEJIN, WAW, FORLAND ETC)	HOHAN, CDW	SHACMAN, HOWO		
	Chassis-driven Model	4x2	4*2	4*6	4*6	4*8
Mixing Drum	Agitating Capacity (m ³)	4.9	6.0	8.0	10.0	12.0
	Residual Rate (%)	≤0.5%				
	Feeding Rate (m ³ / Min)	≥3				
	Charging Rate (m ³ / Min)	≥2				
	Inclination Angle Of Drum	15 (Customized)				
Hydraulic System	Pump Model/brand	SUNNY	SUNNY	ARK	ARK	ARK
	Motor Model/brand	SUNNY	SUNNY	ARK	ARK	ARK
	Reduction Gear	RONGJIAO	RONGJIAO	TOP	TOP	TOP

* Note: HAMAC follows the principle of the perfecting the performance of the products, material and specification may changed without advice.

Trailer Concrete Pump



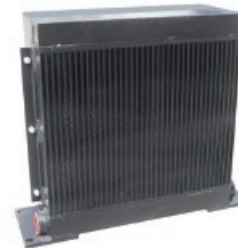
INTRODUCTION

As a mature manufacturer of concrete pumping machines, HAMAC designed this series trailer concrete pump which is suitable for different projects. It is equipped famous brand components such as electric motor, diesel engine, hydraulic oil pump, valves, seals and hose etc. This concrete pump machine can be used to pump the concrete with maximum 40mm aggregates. It is also called S valve type trailer concrete pump.



ADVANTAGES

Trailer Concrete Pump



1. Power supply system: For diesel type, power system adopts YUCHAI, Weichai-Deutz or Cummins diesel engine; for electrical type, it adopts well-known domestic and foreign brands motors such as WANNAN, MENGNIU, Siemens Beide motor etc;

2. Hydraulic oil pump: the main oil pump is from Kawasaki, the valves from Huade or OM from Italy;

3. Lubrication System: Centralized lubrication system adopts progressive distributor which supplies every lubrication point with oil in turn, and the lubrication time can be set to timing. So, the oil filling is accurate, and oil quantity can be saved;

4. Electrical parts: Main electrical components are from Schneider, OMRON or SIEMENS, the reliability of the electronic control system is highly improved;

5. S Tube Valve: The valve is casted from manganese steel, the wearing surface is processed by wear-resistant materials lead to it is anti-high pressure and anti-wear;

6. Glasses plate cutting ring: glasses plates and cutting ring is made from anti-wearing alloy which is long-term service life;

7. Hydraulic Rubber Hose Joints: Equipped with word-famous parts to ensure the safety of the hydraulic system, no leakage.




TECHNICAL DATA

Trailer Concrete Pump

Trailer Concrete Pump (Electric motor type)

Item	Model	HBT30	HBT40	HBT50	HBT60	HBT80
		Theoretical Concrete Delivery capacity (m ³ /h)	Low Pressure	30	40	50
	High Pressure	/	/	23	36	48
Concrete Delivery Pressure (MPa)	Low Pressure	/	/	5.8	6.3	8.3
	High Pressure	10	10	12	13	16
Hydraulic Pressure(MPa)		25	28	28	28	28
Main Hydraulic Pump		JINDA	Kawasaki			
Main Cylinder Dia./Pole Dia.×Stroke(mm)		Φ80/55×845	Φ100/70×1100	Φ110/70×1300	Φ120/80×1650	Φ140/90×1800
Diameter Of Delivery Cylinder(mm)		140	160/180	180	200	200
Electric Motor Power(kW)		37	45	55	90	110
Hopper Capacity(m ³)		0.4		0.55	0.6	
Overall Weight(kgs)		2300	3500	3600	5000	5600
Max.Delivery Distance(m)	Vertical	100	160	160	160	160
	Horizontal	300	500	500	800	1000

* Note: HAMAC follows the principle of the perfecting the performance of the products, material and specification may changed without advice.

TECHNICAL DATA

Trailer Concrete Pump

Trailer Concrete Pump (Diesel engine type)

Item	Model	DHBT30	DHBT40	DHBT50	DHBT60	DHBT80	DHBT90
		Theoretical Capacity(m ³ /h)	30	40	50	60	80
Delivery Pressure(mpa)	10	10	10/12	13	16/18	22	
Delivery Height(m)	120	120	120	180	180	350	
Delivery Distance(m)	500	500	500	600	1000	1500	
Delivery Cylinder Type(mm)	Φ140×1200	Φ180×1300	Φ180×1300	Φ200×1650	Φ200×1650	Φ200×1800	
Main Oil Pump(mm)	Φ80/55×1200	Φ100/70×1300	Φ110/70×1300	Φ125/80×1650			
Hopper Capacity(L)	400	400	400	800	800	800	
Engine Power(kw)	56	82	82	129	129/145/176	199	
Max. Oil Pressure(mpa)	26	31.5	31.5	31.5	31.5	31.5	
Maximum Aggregate Size(mm)	≤30 (≤20)	Aggregate 40	Pebble 50, Aggregate 40				
Wight(kg)	3500	4500	4500	6500	6800	7000	

* Note: HAMAC follows the principle of the perfecting the performance of the products, material and specification may changed without advice.

Concrete Mixer With Pump



INTRODUCTION

In the past time, the clients wanted to buy a concrete mixer to produce the concrete firstly, and then he also needed a concrete pumping machine to deliver the concrete to the buildings or jobsites. There will be two machines to finish the job. It required more people for the projects.

As a mature manufacturer of concrete pumping machines, HAMAC designed this series portable diesel concrete mixer with pump which is suitable for different projects. We have two options, one type is equipped with drum concrete mixer, another type is equipped with twin shaft concrete mixer which can mix the concrete uniformly. It is a new designed versatile machine, one stop solution for concrete mixing and pumping.

ADVANTAGES

- 1.It combines mixing and pumping to reduce weight and space;
- 2.The small concrete mixer with pump is convenient to transport in rural with high efficiency;
- 3.This model can save much labor and cost;
- 4.It is easy to operate with remote controller;



TECHNICAL DATA

Concrete Mixer With Pump

Model		HBT15 (JBT40)	DHBT15(DJBT40)	DHBT15-PLUS (DJBT50)
Power	Power Supply Model	Local electricity 3Phase	Diesel engine	Diesel engine
	Electric Component	Siemens/Schneider/Omron		
Mixing System	Mixer	JZM450 drum mixer, 750L charging hopper, 450L concrete output per batch		
	Mixing Motor	5.5kW*2	Hydraulic	
	Hoist Motor	5.5kW	Hydraulic	
	Submersible Pump	0.75kW	Hydraulic	
Pumping System	Motor Rated Speed	1480 RPM	1800 RPM	
	Main Motor	37KW	62kW, YUCHAI diesel engine	92kW, YUCHAI diesel engine
	Max. Theoretical Mixing Output	18-22m³/h		
	Valves	Overflow and Directional Valves, Top-class Brand		
	Mian Hydraulic Oil Pump	KAWASAKI K3V112		KAWASAKI K3V140
	Main Oil Cylinder	Φ90*Φ65*800mm		Φ100*Φ70*800mm
	Delivery Cylinder	Φ200*800mm		
	Max. Theoretical Pumping Output	40m³/h		
	System Pressure	28Mpa		
	Max. Aggregate Size	Pebble:40mm Aggregate:30mm		
	Delivery Height & Horizontal Distance	80m/260m		
	Machine Size(LxWxH)	5100*2200*2450 mm		
Total Weight	5300kgs	5600kgs	7000kgs	

* Note: HAMAC follows the principle of the perfecting the performance of the products, material and specification may changed without advice.

Truck-mounted Concrete Pump (Concrete Line Pump)



INTRODUCTION

The truck-mounted concrete pump integrates the advantages of trailer concrete pump and truck-mounted concrete boom pump. It is more flexible than the trailer concrete pump, and does not need to be transported, loaded and unloaded, installed and fixed. The equipment is suitable for small batches, multiple construction sites, narrow construction sites and ready-to-go conditions.

ADVANTAGES

1. Power system: Adopt original VOLVO/DUETZ and LOVOL diesel engine;
2. Main oil pump: Adopt HAWE series or Rexroth series from German, Kawasaki series from Japan. Mainly we use variable displacement piston pump to make sure the stable reliable working performance. Because of the pressure exceeding and overflow function, the main oil pump and diesel engine will be protected successfully;
3. Chassis: We adopt the FAW chassis from the biggest truck factory in China. Its quality is reliable. Its emission standard is National VI;
4. The high material sucking technology: Optimized wall of hopper, smooth S tube valve, and accurate blade angle ensure the concrete is sucked into the concrete cylinder, improving the efficiency to more than 90%;
5. Large diameter of concrete delivery cylinder: The diameter of concrete delivery cylinder is enlarged to 230mm, reduce the upward and backward wearing times of concrete pistons, lengthened the service life of concrete pistons.
6. High quality wear resistance parts: Integration of German technology and advanced technology, mechanical friction rotating component's service life greatly improved, with unique lubricating device, mechanical rotation reaches maintenance-free state.

TECHNICAL DATA

Stationary concrete batching plant

Model	HMC5141THB		
Driving System	Chassis Brand	FAW, Left Drive	
	Displacement/Power (kw/h)	6.7/156	
	Max. Driving Speed (km/h)	90	
Pumping System	Brand Of Diesel Engine	DEUTZ Brand	
	Diesel Engine Model	BF6M1013-25T3R	
	Diesel Engine Power (kw)	186	
	Oil Cylinder Inner Diameter × Stroke(mm)	Φ180×Φ125×1800	
	Concrete Cylinder Inner Diameter × Stroke(mm)	Φ230×1800	
	Oil Pressure Of System (MPa)	32	
	Switch Of H-Pressure And L-Pressure	Equipped	
	Cooling Mode Of Hydraulic System	Fan Cooling	
	Max. Theoretical Capacity	H-Pressure (m³/h)	55
		L-Pressure (m³/h)	100
	Pumping Distance (H-Pressure)	Max. Horizontal (m)	125A Pipe, 880
Max. Vertical (m)		125A Pipe, 220	
Concrete Slump(cm)	14~23		
Max. Aggregate Diameter(mm)	Crushed Stone: 40 / Pebble: 50		
Overall Dimension	Length *Width*Height (mm)		
	9195*2458*2623		
Full-Load Total Weight (Kg)	13500		

* Note: HAMAC follows the principle of the perfecting the performance of the products, material and specification may changed without advice.

Truck-mounted Concrete Boom Pump



ADVANTAGES

Truck-mounted Concrete Boom Pump

1. Chassis and power system: FAW, SINOTRUK, FOTON and other heavy-duty chassis are equipped, with strong bearing capacity, good dynamic performance and low fuel consumption; it can achieve the characteristics of fuel saving, energy saving, and convenient maintenance;
2. Pumping hydraulic system: full hydraulic control hydraulic system, oil pressure transmission signal, making the operation simpler and more reliable, improving the reversing speed of the swing cylinder, reducing the reversing impact, and at the same time, the instantaneous action of the large oil cylinder reversing is accelerated, which can make the concrete cylinder full, so that the concrete is pumped continuity and uniform discharge;
3. Boom and outrigger hydraulic system: The boom adopts a load-sensitive proportional control system, which makes the boom run freely and has excellent operation performance; it can not only realize infinitely variable remote control, but also realize emergency manual operation in emergency situations; The oil circuit of the outrigger and the boom is directly switched to avoid misoperation and ensure the operation safety of the boom pump;
4. Boom: Based on accurate data support through finite element analysis, dynamic analysis calculations and experiments. The material is made of high-strength low-alloy steel plate, and all materials and welds have passed 100% non-destructive testing to ensure reasonable boom structure and high reliability;
5. Electric control system: Simple and reliable electric control system, the main electrical appliances are Schneider, equipped with two operating devices: panel and wireless remote control, using well-known brand wireless remote control, in line with ergonomic design principles, beautiful appearance, light and flexible operation.

INTRODUCTION

A truck mounted concrete boom pump is generally mounted onto a truck chassis, hence why it can also be referred to as a 'truck-mounted pump'. A boom pump has an arm (the 'boom') that can be easily and controlled remotely to deliver and apply concrete exactly where you need it. A boom pump is suitable for high-volume concrete pumping, with an output of at least 100 cubic yards an hour.

As a mature manufacturer of concrete pumping machines, HAMAC provide our clients with the truck-mounted concrete boom pump from 30-70 meters length boom as options. A boom pump truck is ideal for delivering concrete from considerable heights and with a great level of accuracy. The rate at which concrete can be delivered, together with its high-volume capacity makes a boom pump ideal for projects on a larger scale.



TECHNICAL DATA

Truck-mounted Concrete Boom Pump

Model	HMC5030	HMC5033	HMC5037	HMC5042	HMC5047	HMC5056	HMC5063	HMC5070
Maximum Vertical Height Of Boom (m)	29.2	32.5	36.6	41.8	46.9	56	61.5	70
Horizontal Distribution Radius Of Boom (m)	25.6	29	32.6	38	42.7	52	57.5	66
Chassis Brand	FOTON / SHACMAN / SINOTRUCK / FAW/ISUZU / DFAC							
If Require More Detailed Information, Please Contact Our Sales Department.								

* Note: HAMAC follows the principle of the perfecting the performance of the products, material and specification may changed without advice.

Spider Concrete Placing Boom



INTRODUCTION

Spider concrete placing boom is also named mobile concrete placing boom. It is easily installed on the jobsite and can be connected to any of concrete pumps. This helps pour large areas without needing to work with the traditional heavy line systems. There is a pipeline inlet under the concrete placing boom, just connect the pipeline of the pump to the pipeline under the concrete placing boom, then the concrete can be placed at different positions on the floor by the concrete placing boom.

ADVANTAGES

1. The placing boom has a Z-shaped or R-shaped boom assembly with three foldable sections, which can swing through 360 degrees while luffing, folding and unfolding, thus allowing it to place concrete to form walls, pipes, columns, piles and other vertical structures without confined placement areas.
2. The boom assembly's luffing, folding/unfolding and swinging are carried out hydraulically with buttons. The hydraulic and electrical system feature overload protectors, flow controls, alarms, phase sequence protectors and so on, which ensures the placing boom to have reliable performance, easy and smooth operation, and high safety.
3. Featuring compact structure and lightweight, the placing boom can be completely lifted and transferred to any suitable places for concrete placement, such as floors, platforms, simply-structured racks or even trailers. It does not need to be fixed while working. In addition, it can be lifted off the placement sites when it is not needed, which leads to no disturbance to other jobs and easy maintenance.
4. The Spider Concrete Placing boom is well fit for the construction of different floors and for complicated jobsites without being influenced by the size and shape of floors.

TECHNICAL DATA

Spider Concrete Placing Boom

Item	Type	HGY13	HGY15	HGY17	HGY21
Max. Placing Radius (M)		13	15	17	21
Big Arm Length (M)		3.7	6	6.66	6.496
Big Arm Elevation (°)		-2~84.4	0~70	0~65	0~65
Medium Arm Length (M)		4.52	5	5.73	4.585 / 4.59
Medium Arm Elevation (°)		0~180	0~180	0~180	0~180
Small Arm Length (M)		4.78	4	4.61	5.029
Small Arm Elevation (°)		0~180	0~180	0~180	0~180
Hose Length (M)		3	3	3	3
Concrete Delivery Pipe (Mm)		Ø125×6	Ø125×6	Ø125×6	Ø125×6
Tail Rotary Radius (M)		2.72	2.81	3.51	3.51
Total Power (Kw)		4	4	5.5/7.5	11
System Pressure (MPa)		24	24	24	24
Rotary Speed (R/Min)		0.3-0.8	0.3-0.8	0.3-0.8	0.3-0.8
Rotary Range (°)		0~360	0~360	0~360	0~360
Supporting Legs Span (M)		3.15×3.15	4×4	4.6×4.6	4.6×4.6
Overall Height (M)		2.9	2.6	3.2	3.2
Bare Machine Weight (Kg)		2700	3230	5000	10000
Balance Weight (Kg)		2×900	2×1100	2200	2×2500
Control Mode		Panel/ Wireless Remote Control			

* Note: HAMAC follows the principle of the perfecting the performance of the products, material and specification may changed without advice.

Self Climbing Concrete Placing Boom



INTRODUCTION

The self climbing concrete placing boom machine is fixed in the elevator shaft and is equipped with an automatic climbing mechanism. Featuring a hydraulic self-climbing system, the placing boom is able to climb up alongside the lift shaft in the building with the rise of floor levels. The vertical reach of the placing boom relies on the performance of your concrete pump.

It is lifted by a hydraulic cylinder and automatically climbs in the elevator shaft, so that the concrete boom placer rises with the rise of the floor. It also can be fixed in the floor directly if there is not an elevator shaft.

ADVANTAGES

1. Horizontal placing radius 21-32 meters (exclude 3m hose), full hydraulic driven;
2. The concrete placing boom can be anchored to the floor with initially prepared holes when working, and it can be lifted by its climbing system. One lifting can meet the need for two floors concrete placement; If the floor area is too large, several tower bodies can be installed and move the boom assembly onto relevant tower body to meet the needs of certain area concrete placement and save cost;
3. Compact structure, easy operation, reliable safety, economical and practical, it can be installed on either floor or elevator shaft.

TECHNICAL DATA

Self Climbing Concrete Placing Boom

Item	HGY21D	HGY24D	HGY28D	HGY32D
Max. Placing	21	24	27.5	32
Big Arm Length (M)	11	12	12.6	14.5
Big Arm Elevation (°)	0-65	0-65	0-65	0-65
Medium Arm Length (M)	6.5	7.5	8.8	9.2
Medium Arm Elevation (°)	0-180	0-180	0-180	0-180
Small Arm Length (M)	3.5	4.5	6.1	8
Small Arm Elevation (°)	0-180	0-180	0-180	0-180
Hose Length (M)	3	3	3	3
Concrete Delivery Pipe (Mm)	Ø125×6	Ø125×6	Ø125×6	Ø125×6
Tail Rotary Radius (M)	3.9	3.9	3.9	-
Total Power (Kw)	5.5	5.5	5.5	15
System Pressure (Mpa)	24	24	24	24
Rotary Speed (R/Min)	0.3-0.8	0.3-0.8	0.3-0.8	0.3-0.8
Rotary Range (°)	0-360	0-360	0-360	0-360
Lifting Speed (M/Min)	0.65	0.65	0.65	0.65
Lifting Height(M/Time)	≤3.6	≤3.6	≤3.6	≤3.6
Concrete Delivery Pipe (Mm)	13.3	13.3	12.6	22.9
Bare Machine Weight (Kg)	8400	9500	10720	16700
Balance Weight(Kg)	3×2000	3×2000	4×2000	-
Control Mode	Panel/Wireless Remote Control			

* Note: HAMAC follows the principle of the perfecting the performance of the products, material and specification may changed without advice.